

2019 TOUR OF WASHINGTON COUNTY TECH GUIDE

Welcome to the 2019 Tour of Washington County!

[Antietam Velo Club](#) and our event sponsors welcome you to the 2019.



This event is being brought to you through the collaborative support of the following organizations.

The City of Hagerstown

The Washington County Commissioners

Hagerstown City Police Department

Washington County Sheriff's Department

Washington County Volunteer Fire Police

The Members of Antietam Velo Club

Our goal is to provide a competitive event for both athletes and spectators. We also want to bring exposure to various attractions in Washington County, MD, and hope you will visit some of the local sites and restaurants, during your stay. Our objective is to grow the sport of competitive cycling while at the same time demonstrating the benefits of cycling as a healthy way to exercise. We are grateful for your support of this event and our team.

So, welcome to Washington County and have a great race. More importantly have a great stay. Joseph Jefferson
President, Antietam Velo Club

Table of Contents

	Page
General Event Information	3
Technical Race Information	4
U23 / Climber Jersey Competitions	6
Kick Off Flyer	9
Stage Race Flyer	10
Stage Race Course Descriptions RR – TT- CRIT	11
Payouts	15



General Event Information

Race Promotion Team

Joseph Jefferson (301) 739-5653 H (301) 331-1129 C..... Promoter/Team Director
Randall Buxbaum (301) 471 8022 Registrar
[AVC/Team Hagerstown-Washington County www.avcracing.com](http://www.avcracing.com) Promoting Team

USA Cycling Race Officials

Kirk Leidy Chief Referee
Jared Ferber Chief Judge

STAGES

The **Saturday Road Races** will start at [Smithsburg High School](#). **Sunday morning Time Trials** will start at the [Boonsboro Free Library](#). **Stage Three Criteriums** will take place in downtown [Williamsport, MD](#).

REGISTRATION AND NUMBER PICK UP

The Stage race requires pre-registration only. Number/packet pick up will be located in the Bulls and Bears Restaurant on Friday evening during Kick-Off Criterium **and at** Smithsburg High School on Saturday morning. Number pick up must take place at least 15 minutes prior to the start of each event.

LICENSES

A valid USA Cycling license must be presented at registration to pick up your race packet.
There will be no one-day or annual license sales. Everyone must have a current license prior to registration.

COMPETITION CLAUSE

Participants who are out of contention in either the Friday evening criterium, or the Road Race (Stage 1) **“may” be pulled** from the event or stage (at the official’s discretion) and issued a place with a prorated finishing time. These participants will be permitted to race in the remaining stages of the event but will not be eligible to receive event, stage and/or GC prize money.

BIB NUMBERS

A total of (2) bib numbers will be issued to racers during registration. Keep and use these for all 3 stages.

PLACEMENT OF BIB NUMBERS:

- Stage 1: Road Race: Right side and back pocket.
- Stage 2: Time Trial: Right side and back pocket.
- Stage 3: Criterium Left Side and back pocket.

SCORING, TIMING AND RACE RESULTS: Provided by Jon Miller -- Big Guy Group



Technical Information for Races

START TIMES

The start times contained in this technical guide (Pages 9 & 10) may be changed due to unexpected circumstance.

SIGN-IN: Other than your number pick-up, there will be no sign-in required for any of the stages. Please notify registration or an official if you withdraw from the event.

STAGING

1. Staging for the Saturday Road Race will take place in the parking lot of Smithsburg High School.
2. Sunday Time Trial will start at the Boonsboro Free Library 401 Potomac Street Boonsboro, MD **Parking for the Time Trial is at Shafer Park and not the Library!**
3. Staging for the Sunday Criterium will take place in front of the Williamsport Post Office. If the TT result and General Classification standings are available, the top 20 riders in the General Classification will be called up to the front. Call ups will be based on the GC if the TT results are available at the time of the race start. If not, the call ups will be based on the Saturday road race results.

RACING DISTANCES

Racing distances listed on the race flyers in this technical guide (Pages 9 & 10) may be changed due to unforeseen circumstances. Any changes in the distance of an event will be announced at the start of the event.

SCORING FOR GENERAL CLASSIFICATION

The General Classification results will be decided based on overall time.

There will be time bonuses for the first three finishers in the RR and Criterium.

- The bonuses for the top three finishers in the Road Race will be 16, 10, and 6 seconds.
- No time bonuses for the Time Trial
- Time bonuses will be awarded in the Criterium at the one quarter, halfway and three-quarter mark, as well as at the finish. Those bonuses will be awarded as follows 5, 3, and 1 seconds for every intermediate sprint and 16, 10 and 6 seconds on the final sprint.
- In the event of a tie, the rider with the higher finish in the road race will be awarded the higher General Classification placing.
- MABRA ROAD CUP points will be awarded based on final general classification placing.

Technical Information for Races (continued)

FINISHING

Road Race: Riders out of contention may be instructed to leave the course prior to the completion of the final lap. These riders will be given a prorated time for their final lap and will be allowed to continue racing in the next stage

Time Trial: Riders must finish the time trial to be eligible to compete in the stage three Criterium.

Criterium: Riders out of contention may be instructed to leave the course prior to the completion of the final lap. These riders will be given a prorated time for this stage and GC.

RACE CONDUCT

All races will be conducted under 2019 USA Cycling rules. **Riders are responsible for knowing the rules.**

Find the complete rule book at <http://www.usacycling.org/news/user/story.php?id=4220>

FEEDING

Per USAC rules, the passing of food or refreshments to competitors shall be at the discretion of the Chief Referee for each race. Should it be allowed, the Feed Zone for the Road Race will be located on Itnyre Rd. just after turning left off of Rowe Rd.

TECHNICAL SUPPORT

SRAM Neutral Race Support will be available for the entire weekend. Wheels used for changes on the race route are provided by SRAM and must be returned immediately following the race.

SUPPORT

- Neutral Support provided by SRAM.
- The wheel van will follow the riders in the road race.
- There will be a sweep vehicle to help competitors get back to the finishing area in case of a mishap.
- SRAM Neutral Support will be set up at the Wheel Pit for both Friday and Sunday Crits
- There will be a wheel vehicle approximately 2.5 miles into the TT course!

WARM-UP/COOL DOWN

There are plenty of roads to use for warm ups, prior to the start of the road race. Riders are expected to obey all local traffic laws. However, we strongly suggest that you bring a trainer for the TT and Criterium. **Riders who fail to obey local traffic laws are subject to a warning, then time penalties or DQ for a second or third offense (8B1(b)).**

AWARDS / PAYOUTS

Riders are responsible for picking up their prize money on the evening of the Criterium. Prize money from the stage race will be by check sent via USPS or sent via PayPal within 30 days of the final day of the event.

Technical Information for Races (continued)

LOCAL HOSPITAL

[Meritus Medical Center](#) 11116 Medical Campus Rd. Hagerstown, MD 21742 301-790-8000

Directions from Smithsburg: Turn right when leaving Smithsburg Middle School and travel south to route 64. Turn right on to Maryland Rt. 64W. Travel west on Rt. 64 until reaching Robinwood Drive. Turn left on Robinwood Drive. **Follow signs to the hospital, which is located just off Robinwood Drive.**

Directions from Boonsboro: Travel west on alternate 40 in to the town of Funkstown. Continue straight through the intersection in Funkstown as this road will turn into S. Edgewood Drive and eventually lead you to route 40. Continue to travel straight on S. Edgewood Drive as it will turn in to Robinwood Drive. **Follow signs to the hospital, which is located just off Robinwood Drive.**

Directions from Williamsport: Take I81 North and exit on to I70 East. Exit off 70 East and on to Route 40 West. Take the **first** right on to S. Edgewood Drive as it will turn in to Robinwood Drive. **Follow signs to the hospital, which is located just off Robinwood Drive.**

RESTROOM FACILITIES: Facilities will be provided at the start of each venue. Portable facilities will be located at the high school for the Saturday road race. Portables for the Sunday Time Trial will be in the lower parking lot of Shafer Park with one located at or near the start. Portable facilities will be located at the Williamsport Town Hall on Sunday.

PUBLIC URINATION AT ANY VENUE CAN RESULT IN RIDER DISQUALIFICATION!

LITTERING: We ask the all participants be respectful of the communities in which these events are being promoted. With that in mind we hope that all riders do their best to dispense all waste within the designated feed zone and/or attempt to pick up their waste after their respective event.

ANNOUNCING: The announcing services will be provided by Joseph Jefferson – The Square Dance DJ.

LOCAL LODGING – PLEASE SUPPORT OUR PARTNERS:

Holiday Inn Express 241 Railway Lane Hagerstown, MD 301 745-5644 (**RACE HEADQUARTERS**)

Ramada Plaza 1718 Railway Lane Hagerstown, MD 301 797-2500

Homewood Suites by Hilton 1650 Pullman Lane Hagerstown, MD 21740 (301) 665-3816

GOOD INTENTIONS

This event is being promoted for the benefit of amateur sports. Any errors within the tech guide are unintentional as we are attempting to do our best to provide as much data as possible to you, our consumer!



Introducing **NSMI**, your title sponsor of the Leader's Jersey competition for the **2019 Tour of Washington County** powered by **SRAM!**



Introducing **Hub Labels**, your official climber's jersey competition sponsor of the **2019 Tour of Washington County** powered by **SRAM!**

Amazing labels for your amazing products.

We have over 37 years of service committed to environmentally friendly practices.



Introducing **Grease Monkey!** The 2019 sponsor of the U23 Jersey Competition of the **2019 Tour of Washington County** powered by **SRAM!**

Special classification jerseys competitions will take place throughout the stage race, with specific instructions being giving out at the start of each stage. Any ties in competition will be broken based on the participant's finishing position at the end of each stage.





What is Structural Elements?

(se)[™] is a fusion of bio mechanically based structural bodywork and the use of acupuncture/ dry needling. This synthesis manifests as a highly effective clinical modality used to normalize connective tissue irregularities that develop during abnormal strain. <http://www.structuralelements.com/>

Logistical Support

Structural Elements will provide a company vehicle to conduct course sweeps on Friday evening and will also serve as one of the neutral race support vehicles during the stage races on Saturday morning and afternoon.

Post-Race Recovery Support

Structural Elements will be on site at the conclusion of the stage one road events to provide free post-race recover support with massages and NormaTec[™] Recovery Compression Boots.

Tour of Washington County Kick-Off Criterium



Hagerstown Art & Entertainment District

Friday June 14, 2019

Event	Start	Distance/Laps	Prize	Placing	Entry
Penny Farthing Open	5:30pm	30 Minutes			
*Category 4/5 Men	6:00 pm	45 Minutes	\$400	10 Places	\$35.00
*Category 4/5 Women	6:45 pm	45 Minutes	\$400	10 Places	\$35.00
Women 1/2/3 -Women 3	7:30 pm	45 Minutes	\$1000/\$400	15/10 Places	\$35.00
Men 3	8:15pm	60 Minutes	\$500	10 Places	\$35.00
Men Pro, 1, 2, 3	9:15pm	60 Minutes	\$2000	20 Places	\$35.00

- *Will serve as race number three of the Appreciation Cup Series.
- Minimum of 25 pre-registered athletes needed by 11:59 pm June 1st to secure listed prize list
- Participants must finish on the same lap as the main “field” in order to receive prize money.
- Held under USA Cycling event permit. USA Cycling Criterium Race rules apply.
- Registration opens at 5:00 pm and closes 15 min prior to each event.
- Entries received after June 11th, and race day entries add \$12.00.
- Checks payable to: Antietam Velo Club. Use 2019 Standard Entry/Release Form
- Mail Entries to: Antietam Velo Club 1321 Glenwood Ave. Hagerstown, MD 21742
- **On-line at www.bikereg.com**
- Online registration subject to processing fee!
- *Info: (301) 739-5653 or (304) 876-5477 E-mail: jjeffers@shepherd.edu . Web: www.avcracing.com



Directions: Simply used the following address for directions 7 North Potomac Street Hagerstown, MD 21740

Course Description

<http://www.mapmyride.com/route/us/md/hagerstown/622128948391371247>

This is a classic downtown criterium course that is .8 miles/1.29 kilometers in length. There are five 90 degree left hand turns, with a right to left chicane and “slight” uphill drag to the line. **This year’s course will be run in the opposite direction!**





Stage 1 Saturday June 15th - Smithsburg Road Race

Event	Start	Distance/Laps	Prize	Placing	Entry Fees
Wave Number 1					
Men 4/5	8:15 am	44 Miles/ 6 Laps		3 Places	\$100.00
Women 1/2/3 Women 3	8:20 am	44 Miles/ 6 Laps		3 Places	\$100.00/\$50.00
Wave Number 2					
Men 3	10:30am	44 Miles/ 6 Laps		3 Places	\$100.00
Men 45+	10:35am	44 Miles/ 6 Laps		3Places	\$100.00
Wave Number 3					
Pro, 1, 2, 3	12:45pm	67 Miles/ 9 Laps		3 Places	\$100.00
Men 35+	12:50pm	67 Miles/ 9 Laps		3 Places	\$100.00

Stage 2 Sunday June 16th - Boonsboro Time Trial

Event	Start	Distance/Laps	Prize	Placing
Para-Cyclists	7:00am	10.5 Kilometers	TBD	TBD
Men 4/5		10.5 Kilometers		3 Places
Women's 1/2/3 Women 3		10.5 Kilometers		3 Places
Men 3		10.5 Kilometers		3 Place
Men 45+		10.5 Kilometers		3 Places
Pro 1/2/3		10.5 Kilometers		3 Places
Men 35+		10.5 Kilometers		3 Places

Stage 3 Sunday June 16th - Williamsport Criterium

Event	Start	Time	GC Prizes	Placing
Men 4/5	Determined	15 Miles	\$500	5 Places
Women's 1/2/3 Women 3	based	15 Miles	\$1000/ \$250	15/3 Places
Men 3	on	20 Miles	\$750	10 Places
Men 45+	finish	15 Miles	\$500	5 Places
Pro 1/2/3	of	20 Miles	\$2000	20 Places
Men 35+	TT	20 Miles	\$750	10 Places

- Held under USA Cycling event permit. USA Cycling rules apply.
- Field limit of 100 riders in all fields. NO CENTER LINE RULE.
- Participants must pre-register for this event. There is a transaction fee associated with online registration.
- Minimums of 25 pre-registered needed by May 28 in order to secure each respective category and full prize list.
- Online registration closes on June 11, 2019 at 11:00pm
- Checks payable to: Antietam Velo Club. Use 2019 Standard Entry/Release Form
- Mail Entries to: Antietam Velo Club 1321 Glenwood Ave. Hagerstown, MD 21742



*Info: (301) 739-5653 or (304) 876-5477 E-mail: jjeffers@shepherd.edu .Web: www.avcracing.com

Directions to road race: Map quest or Goggle 66 N Main Str. Smithsburg, MD. 21783

Directions to the TTstart: Map quest or Goggle 401 Potomac Street Boonsboro, MD. 21713

Directions to the criterium start: Map quest or Goggle 28 W Salisbury Str. Williamsport. 21795

TECH MANUAL AVAILABLE AT www.avcracing.com

Stage Race Course Descriptions

Meritus Health Tour of Washington County Stage Race Smithsburg Road Race – Stage One Saturday June 15, 2019

DISTANCES: Distances will vary based on racing category. Refer to the Race Flyer in the Tech Guide

Course Description

This course is a bit of a throwback to our first edition of this event but just 1 mile longer. Participants will stage in the parking lot of Smithsburg High School. Upon exiting the parking lot, participants will turn right and travel west. **Turn one** will be a left onto **Rowe Rd.** **Turn two** will be a left on to Itnyre Rd. **Turn three** will be a right on to **Cave Hill Road.** **Turn four** is a left turn on to **Old Forge Road.** **Turn five** is a right turn on to **Beck Road.** **Turn six** is a left turn on to **Unger Road.** **Turn seven** is the right turn on to **Leitersburg Smithsburg Road.** Participants will complete this 7 mile loop multiple times before then travel east and back to Smithsburg High School on the final lap!

Feed Zone is located at the start of Itnyre Rd. / .4 of mile from the turn on to Rowe Rd.!

Climber's Competition contested at the top of the first climb on Leitersburg/Smithsburg Rd and 1.1 mile from the right turn off of Unger Rd.!

- **THERE IS A ROLLING ENCLOSURE AND RIDERS HAVE ACCESS TO THE ENTIRE ROAD. DESPITE THE FULL ACCESS RACERS STILL NEED TO RACE RESPONSIBLY IN THE CASE THAT AN ON COMING MOTORIST FAILS TO MOVE OVER WHEN INSTRUCTED TO DO SO.**
- **RIDERS WHO ARE OUTSIDE OF THE ROLLING ENCLOSURE (THE RACING ENVELOPE) MUST FOLLOW THE RULES OF THE ROAD, WATCH FOR VEHICLES, AND DO NOT HAVE ACCESS TO THE ENTIRE ROAD**
- **WHEN FINISHING THIS ROAD RACE, RIDERS MUST TURN RIGHT AND INTO THE ELEMENTARY SCHOOL PARKING LOT THAT IS LOCATED ON THE RIGHT OF THE FINISH LINE. RIDERS MUST REMAIN IN THAT LOT UNTIL THE DESIGNATED TRAFFIC CONTROL OFFICIALS ALLOWS THEM TO LEAVE.**

Stage One Road Race -- Zipp Wheel Recommendation: Zipp Firecrest 303. The 303 has emerged as one of the most formidable wheels in the pro peloton, with wins in the Tour de France, Paris-Roubaix, the Tour of Flanders and more. Its speed, light weight, and utter reliability have been proven in pro cycling's most demanding races.

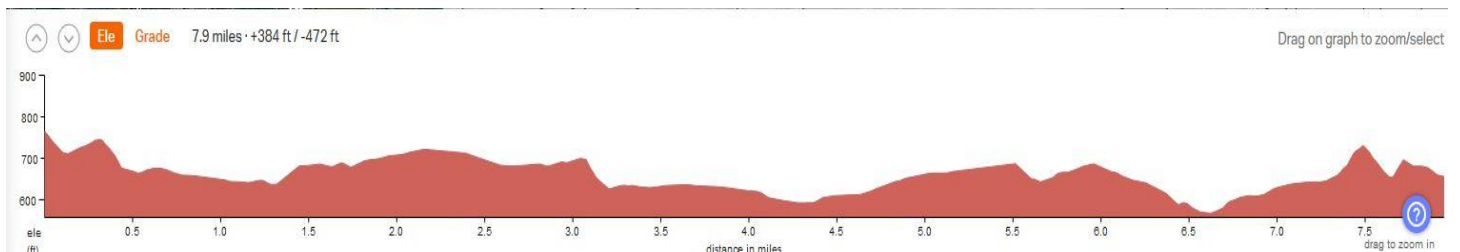
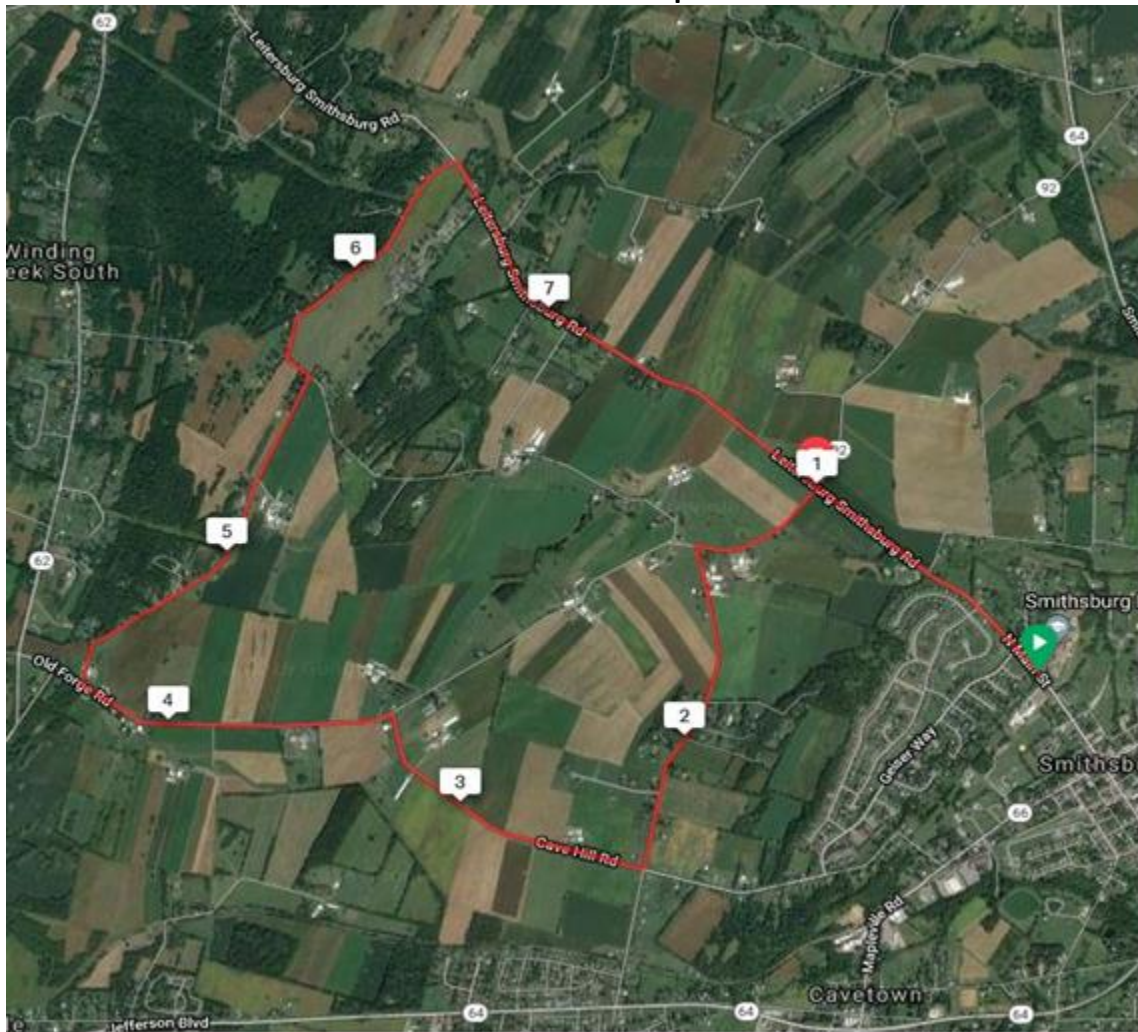
DIRECTIONS: Navigate to Smithsburg High School, Smithsburg, MD 21783

FEED ZONE - The feeding zone is located on Itnyre Rd., just after making the left off of Rowe Rd.

RIDER TRASH -- Rider trash is only to be discarded on the right side of Itnyre Rd. prior to the start and finish of the feeding zone.

Stage Race Course Descriptions (continued)

Smithsburg Road Race Stage 1 2019 Course Map



Course Description

This course is a bit of a throwback to our first edition of this event but just 1 mile longer. Participants will stage in the parking lot of Smithsburg High School. Upon exiting the parking lot, participants will turn right and travel west. **Turn one** will be a left onto **Rowe Rd**. **Turn two** will be a left on to Itnyre Rd. **Turn three** will be a right on to **Cave Hill Road**. **Turn four** is a left turn on to **Old Forge Road**. **Turn five** is a right turn on to **Beck Road**. **Turn six** is a left turn on to **Unger Road**. **Turn seven** is the right turn on to **Leitersburg Smithsburg Road**. Participants will complete this 7 mile loop multiple times before then travel east and back to Smithsburg High School on the final lap!

Tour of Washington County -- Tech Guide Insert June 12, 2019

Climber's Competition

Points will be awarded on every lap and at the top of the first climb on Leitersburg Smithsburg Rd (1.1 miles from the right off of Unger Rd.), with the exception of the last lap when points will be awarded at the finish.

Points will be awarded to the top three athletes who cross the line in the following manner, 3, 2 and 1 point with 6, 4 and 2 points being awarded at the finish line.

Feeding and Trash

The feed zone is located on Itnyre Rd., which is .4 miles from the right turn on to Rowe Rd.

There will be green signage which indicates where participants need to discard trash and they will be located on the right side of the road and **prior to entering the feed zone.**

Participants are encouraged to double back post-race and assist in cleaning the green zone.

Red signage will be located on the right side of the road, which will indicate the end of the feed zone.

Athletes are subject to time penalties, fines and/or expulsion for feeding and/or discarding trash outside of the designated area.



Stage Race Course Descriptions (continued)

Boonsboro Time Trial

Shafer Park / Boonsboro Free Library

Sunday Morning June 16, 2019

Stage Two

DISTANCE

All participants will compete on the same 10.5-kilometer course.

START TIMES

The TT Start Times will be posted at the Road Race venue (Smithsburg High School) on Saturday. Start times will be posted on the promoting team's website at www.avcracing.com and communicated via emailed via BikeReg registration info. Official time will be maintained by USA Cycling officials.

PARKING AND TRAFFIC -- Parking confined to Shafer Park.

- **No parking allowed near the staging area (Boonsboro Free Library).**
- **Riders are restricted from riding on the course for warm up or cool down. BE AWARE! BE CAREFUL!**
- **Riders are subjected to possible disqualification for violating any traffic laws.**

Start is at the Boonsboro Free Library and is a 10.5 kilometer out and back course on route 34. Great road surface and wide shoulders.

- **Participants must remain on the shoulder at all times, except when making the turn around. Riders are subject to time penalty/disqualification due to unsafe riding at any venue.**
- **Upon completing the stage two TT, participants are expected to exercise extreme caution with traveling back in to the town of Boonsboro and limit their travels on route 34.**
- **The side neighborhood on the right side of the road is a perfect place to pull into to cool down as opposed to riding on route 34.**

Stage Two Time Trial Zipp Wheel(s) Recommendation: Zipp 808 Front, Sub-9 Disc.

The **Zipp 808** excels whenever the situation calls for an all-around wheel set with a heavy dose of aero attitude. The deep profile and 16/20 front/rear spoke count will satisfy even the most focused time-trial specialists, yet it's stable in crosswinds and stiff enough for the sprinters.

The **Sub-9'Disc** highlights so far include a pair of Ironman® 70.3 World Championships, a Tour de France® yellow jersey and some of the fastest Ironman®-distance bike splits ever recorded. We expected nothing less from the ultimate aerodynamic breakthrough.

DIRECTIONS: Navigate to [401 Potomac Street Boonsboro, MD. 21713](#)

Stage Race Course Descriptions (continued)

Williamsport Criterium Sunday Afternoon June 16, 2019 Stage Three

DISTANCE

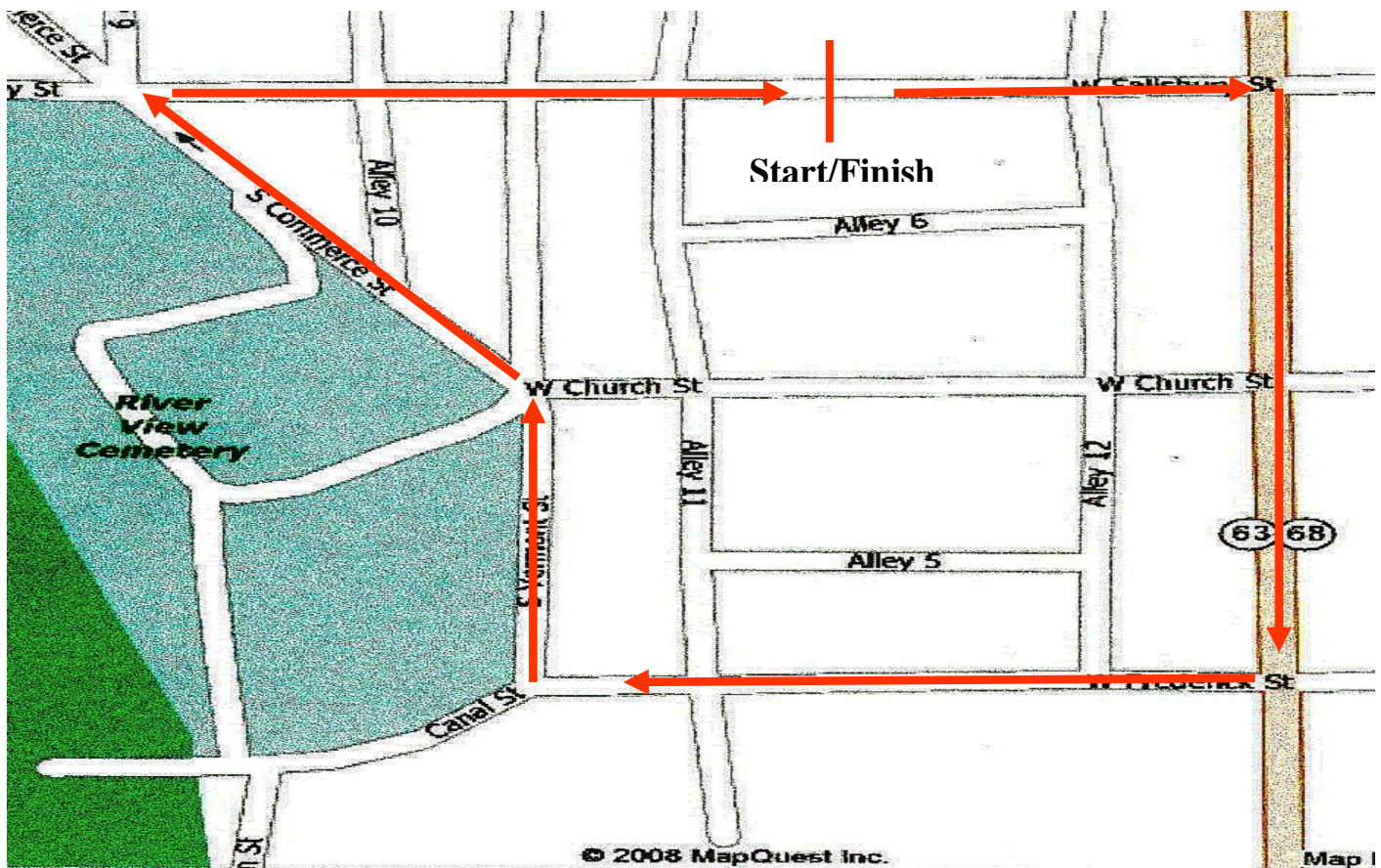
Distances will vary based on racing category.

COURSE DESCRIPTION

Located in downtown Williamsport, MD, this is a 1.1 km or 0.7-mile course with a long and slight uphill finishing straight and a very fast bottom section. Four right hand turns and one sweeping left. Pit will be located across from start / finish line.

Stage Three Criterium: Zipp Wheel(s) Recommendation: Zipp Firecrest 404. Its 58 mm rim depth is a classic all-around performer that has carried athletes to victory in every kind of event – triathlons, criteriums, breakaways, field sprints and even Grand Tour mountain stages.

DIRECTIONS: Navigate to [28 W Salisbury Str. Williamsport, MD 21795](#)



Stage / General Classification Pay Out Schedule

Stage Race General Classification Pay Out

CASH PRIZES WILL BE SENT VIA PAYPAL or MAILED VIA USPS WITHIN 30 DAYS.

MERCHANDISE PRIZES TO BE PICKED UP AT THE START OF STAGE 3 IN WILLIAMSPORT, MD.

Stage Prizes	4/5 and 45+ GC	Women 1/2/3	Men 1/2/3	Men 3 and 35+	Women 3
\$75.00	\$150.00	\$105.00	\$200.00	\$100.00	\$125.00
\$50.00	\$125.00	\$95.00	\$150.00	\$95.00	\$75.00
\$25.00	\$100.00	\$90.00	\$140.00	\$90.00	\$50.00
	\$75.00	\$85.00	\$120.00	\$85.00	
	\$50.00	\$80.00	\$110.00	\$80.00	
		\$75.00	\$100.00	\$75.00	
		\$70.00	\$90.00	\$70.00	
		\$65.00	\$90.00	\$60.00	
		\$60.00	\$90.00	\$55.00	
		\$50.00	\$90.00	\$40.00	
		\$45.00	\$90.00		
		\$45.00	\$90.00		
		\$45.00	\$80.00		
		\$45.00	\$80.00		
		\$45.00	\$80.00		
			\$80.00		
			\$80.00		
			\$80.00		
			\$80.00		
			\$80.00		